



Engine	Cummins QSM11
Max. Gross Power	287 kW (385 hp / 390 ps) @ 1,800 rpm
Max. Net Power	273 kW (366 hp / 371 ps) @ 1,800 rpm
Operating Weight	30,600 kg
Standard Bucket Size	5.4 m ³
Standard Breakout Force	245 kN
Standard Dump Clearance	3,330 mm

890H WHEEL LOADER

890H SPECIFICATIONS >>>

ENGINE

Emission Regulation	Tier 2/ Stage II
Manufacturer	Cummins
Model	QSM11
Max. Gross Power	287 kW (385 hp / 390 ps) @ 1,800 rpm
Max. Net Power	273 kW (366 hp / 371 ps) @ 1,800 rpm
Rated Power	261 kW (350 hp / 355 ps) @ 2,100 rpm
Peak Torque	1,776 N · m @ 1,400 rpm
Displacement	10.8 L
Number of Cylinders	6
Aspiration	Turbocharged & Air-to-air intercooled

TRANSMISSION

Transmission Type	Countershaft, power shift
Torque Converter	Single stage, three elements
Maximum Travel Speed, fwd	38.2 km/h
Maximum Travel Speed, rev	26.5 km/h
Number of Speeds, fwd	4
Number of Speeds, rev	3

AXLES

Differential Front Type	Hydraulic Lock Differential
Differential Rear Type	Conventional
Axle Oscillation	± 13°

STEERING

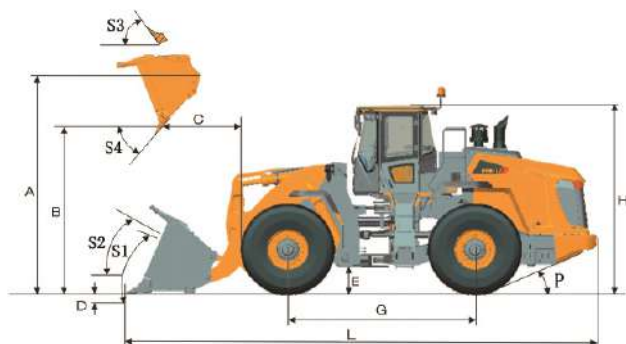
Steering Configuration	Articulated
Steering Relief Pressure	20.7 MPa

BRAKES

Service Brake Type	Wet discs brake
Service Brake Actuation	Hydraulic
Parking Brake Type	Manual electronic control
Parking Brake Actuation	Hydraulic

HYDRAULIC SYSTEM

Main Pump Type	Piston
Main Relief Pressure	26 MPa
Raise	6.0 s
Dump Time	1.6 s
Float Down Time	3.4 s
Fastest Total Cycle Time	11 s



LOADER ARM PERFORMANCE with Standard Bucket 5.4 m³

Tipping Load - Straight according to ISO 14397-1:2007	23,622 kg
Tipping Load - Full Turn according to ISO 14397-1:2007	20,600 kg
Bucket Breakout Force	245 kN
A Maximum Hinge Pin Height	4,572 mm
B Dump Clearance at Full Height Discharge	3,330 mm
C Dump Reach at Full Height Discharge	1,479 mm
D Maximum Digging Depth, Bucket Level	142 mm
S ₁ Bucket Rollback at Ground Level	45°
S ₂ Bucket Rollback at Carry	49°
S ₃ Bucket Rollback at Maximum Height	62°
S ₄ Maximum Dump Angle at Full Height	45°

BUCKET PERFORMANCE

Reference Bucket	4.5 - 9.0 m ³
------------------	--------------------------

DIMENSIONS

E Ground Clearance	476 mm
G Wheelbase	3,700 mm
H Cab Height	3765 mm
J Wheel Tread	2,420 mm
K Width Over Tires	3,170 mm
L Length with Bucket Down	9,352 mm
M Turn Angle, Either Side	38°
P Rear Angle of Departure	25°
R ₁ Turning Radius, Bucket Carry	7,725 mm
R ₂ Turning Radius, Outside of Tire	7,011 mm

TIRES

Tire Size	29.5 - 25
-----------	-----------

OPERATING WEIGHTS

Operating Weight	30,600 kg
------------------	-----------

SERVICE CAPACITY

Fuel Tank	485 L
Engine Oil	33 L
Cooling System	41 L
Hydraulic Reservoir	402 L
Transmission and Torque Converter	50 L
Axles, each	65 L

