



<b>Engine</b>	Cummins B3.9-100C
<b>Rated Power</b>	73.5 kW (99 hp / 100 ps) @ 2,200 rpm
<b>Max. Working Radius</b>	8,690 mm
<b>Drawbar Pull</b>	153 kN
<b>Operating Weight</b>	17,300 kg
<b>Max. Grapple Opening</b>	1,843 mm
<b>Gradeability</b>	35°

# 915E FM FORESTRY EXCAVATOR

# 915E<sup>FM</sup> SPECIFICATIONS >>>

## ENGINE

Manufacturer	Cummins
Model	B3.9-100C
Rated Power	73.5 kW (99 hp / 100 ps) @ 2,200 rpm
Peak Torque	385 N·m @ 1,500 rpm
Number of Cylinders	4
Displacement	3.9 L

## HYDRAULIC SYSTEM

Main Pumps Total Flow	2*132 L/min
Relief Pressure, main	34.3 MPa
Relief Pressure, boost	37 MPa

## SERVICE CAPACITIES

Fuel Tank	245 L
Engine Oil	14 L
Cooling System	21 L
Hydraulic Reservoir	160 L
Hydraulic System Total	240 L

## BOOM & ARM

Boom Length	4,600 mm
Arm Length	2,900 mm

## UNDERCARRIAGE

Shoe Width	960 mm
Number of Shoes per Side	42
Number of Upper Rollers per Side	2
Number of Bottom Rollers per Side	6

## TRACK DRIVE

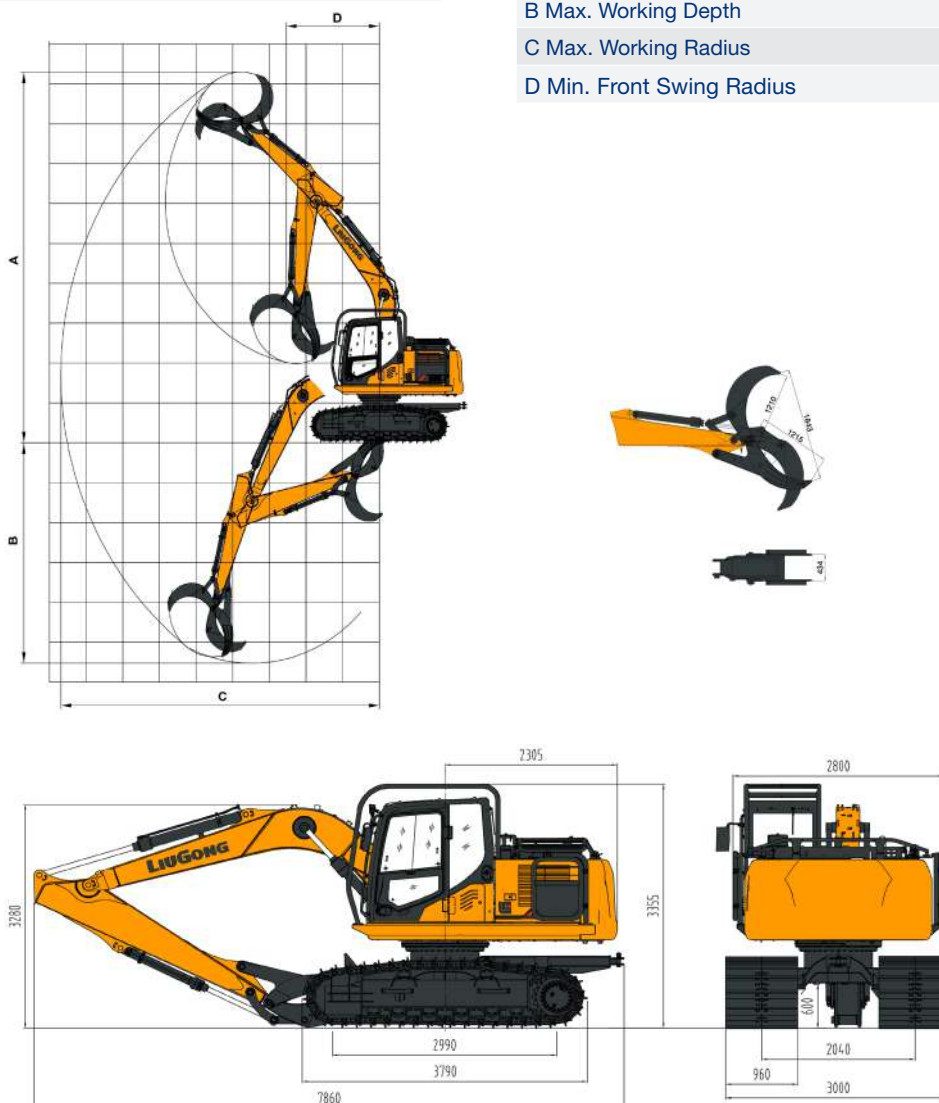
Maximum Travel Speed	4.7 km/h
Drawbar Pull	153 kN

## SWING SYSTEM

Swing Speed	11.94 rpm
-------------	-----------

## WORKING RANGE

A Max. Working Height	9,300 mm
B Max. Working Depth	5,530 mm
C Max. Working Radius	8,690 mm
D Min. Front Swing Radius	2,550 mm



Unit: mm